



# Smart Touch Light Switch

Installation and User Manual v2.1a

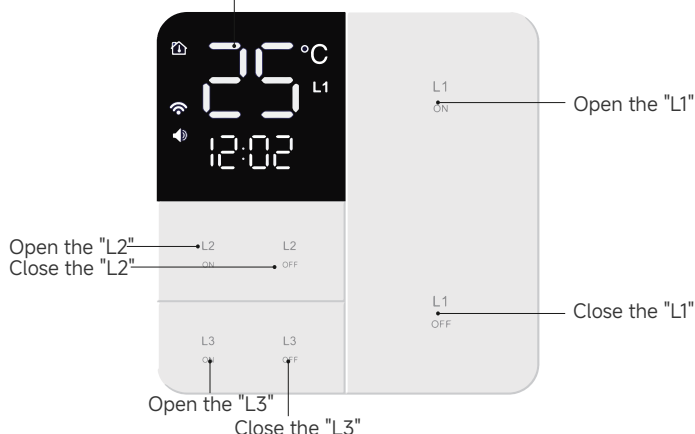


Please make sure to turn off the main power switch before installation.

## Product introduction

Thank you for purchasing this product.

Display screen can display temperature, time, ON/OFF status, network access mark.



\*Ps: The 1 Gang Switch version does not have an L2 route; the L2 ON and OFF buttons correspond to the "+" and "-" keys.  
The 1 Gang and 2 Gang Switch versions do not have an L3 route; the L3 ON and OFF buttons correspond to the "Switch" and "Clock" keys.

## Display instructions

Icon	Instructions	Notes
12:02	Current Time	Automatically obtain time when connected to the internet / Adjust manually when not connected to the network.
25°C	Temperature	There is a temperature sensor inside the switch to monitor the room temperature around the switch.
L1   L2   L3	Function Status	The icon lights up to indicate that this circuit is turned on, or it is turn off.
WiFi icon	Network Status	Steady on indicates normal connection to WiFi, flashing indicates attempting to connect to the network.
Buzzer icon	Buzzer Status	The icon on the left indicates "ON", while the icon on the right indicates "OFF".
Pairing icon	Pairing Status	The icon flashing indicates that the switch is in network configuration mode.

## Precautions

1. Please disconnect the power supply first before installing, replacing or removing light fixture and switches.
2. During installation, the L1 circuit must be connected to the light fixture before the switch can be powered on normally.
3. After installation, if the light fixture on the L1 circuit flashes or trips directly, please connect the included capacitor.
4. Keep this product off moisture and do not spill water or other liquids onto it.

## Setting the Time

When not connected to the network, press and hold L3 OFF for five seconds to enter time adjustment mode. L2 ON or L2 OFF buttons are used to increase or decrease the time, respectively; press L3 ON to switch between adjusting the hours and minutes. After completing the adjustment, press L3 OFF to exit.

When connected to the network, press and hold L3 OFF for five seconds to perform network time calibration; the buzzer will beep three times when the calibration is successful.

## LCD screen state switching

Press and hold L1 ON button for five seconds to enter the LCD screen switching mode. The screen will display F3, indicating that the screen will turn off 30 seconds after all functions are turned off, and F4 indicating that the LCD screen will remain on. Press L2 ON to switch to F4 and L2 OFF to switch to F3. Press L3 OFF to exit after making your selection.

## Buzzer On and Off

Press and hold L1 OFF for five seconds to enter the LCD screen state switching mode. The screen will display F5, indicating that the buzzer is on, and F6 indicating that the buzzer is off. Press L2 ON to switch to F6 and L2 OFF to switch to F5. Press L3 OFF to exit after making your selection.

## Reset Network Settings

When connected to the network, press and hold L2 OFF for five seconds. The buzzer will beep three times and the WIFI icon will turn off, indicating that the network settings have been reset.

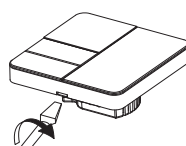
## Tips

Input Voltage: AC100V-250V  
 Input Frequency: 50Hz/60Hz  
 Working Temp: -10~50°C  
 For residential and indoor Dry Location Use Only  
 Made In China  
 Manufacturer: Suzhou MCL Electronic Technology Co.,Ltd  
 Address: 105 Dongcang North Road, Taicang City, Suzhou City, Jiangsu Province, China

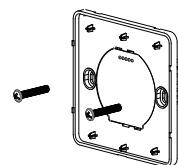
## Installation Method



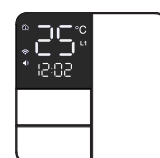
Please make sure to turn off the main power switch before installation!



①. Open the switch panel with a screwdriver



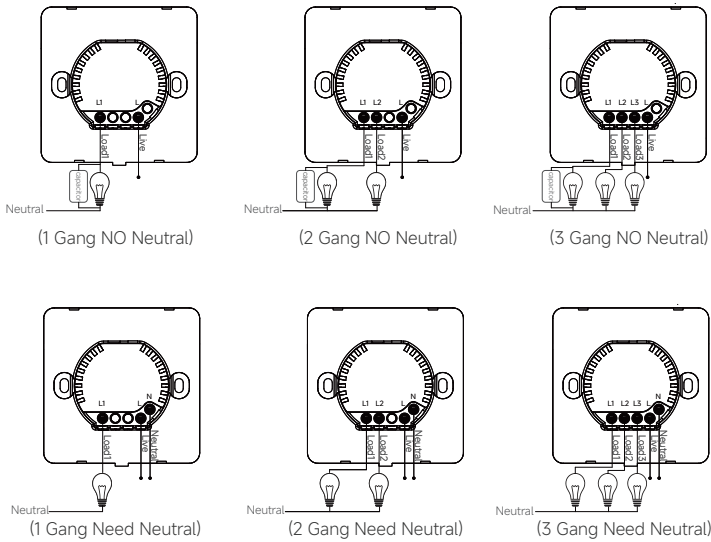
②. Connect the wires as shown in the diagram, then use screws to fix the bottom shell to the switch box.



③. Simply snap the switch panel into the bottom shell.

## Wiring Method

For the switch that no neutral, a capacitor will be included with the switch. Generally, the capacitor doesn't need to be connected. If the lamp flickers due to its too low power, you can connect the capacitor to the lighting fixture of the L1 circuit. There is no distinction between the positive and negative poles for this connection.



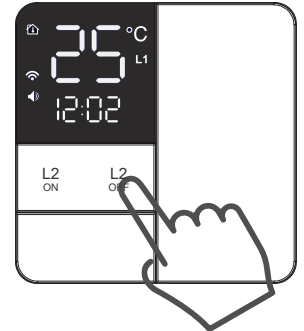
## Configuration Method

1. Use your phone to scan the QR code on the right, or go to the Google Play or App Store to download the "Smart Life App".
2. Enter the Smart Life app and follow the instructions to register and login to your account.

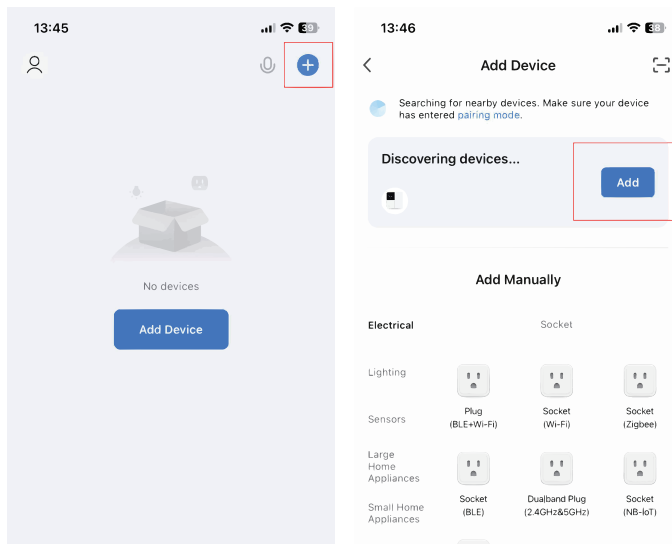


Download the 'Smart Life app'

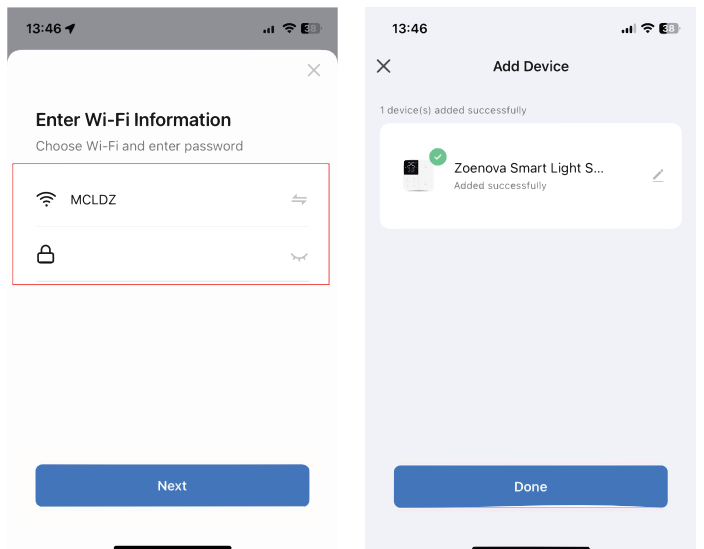
3. After the switch is powered on, the key icon in the lower right corner of the screen will flash, indicating that the switch has entered the network configuration mode. (Ps. If the key icon is not flashing, press and hold L2 ON/"-" key to re-enter the network configuration mode.)



4. Allow the App to access Bluetooth and keep the Bluetooth enabled. Click the "+" icon in the upper right corner to add a device. Once the device is detected, add it to the app.

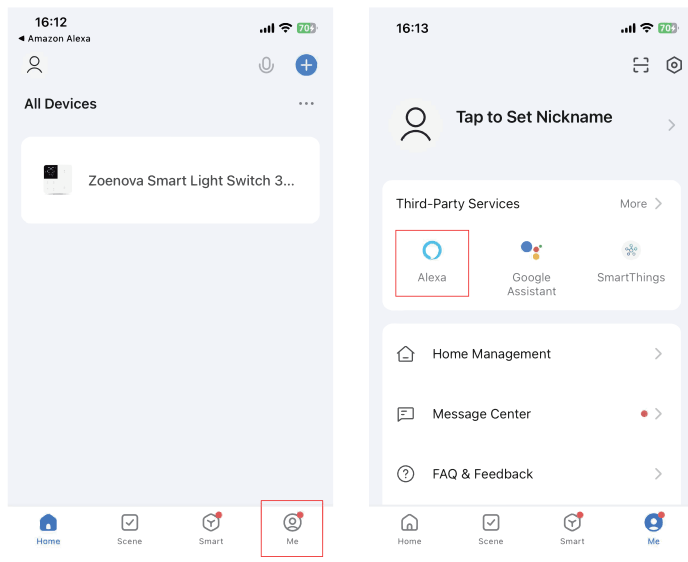


5. Select Wi-Fi and enter the password (note: only 2.4GHz Wi-Fi is supported). Click "Next" to complete the setup process, then you can control it with your phone.

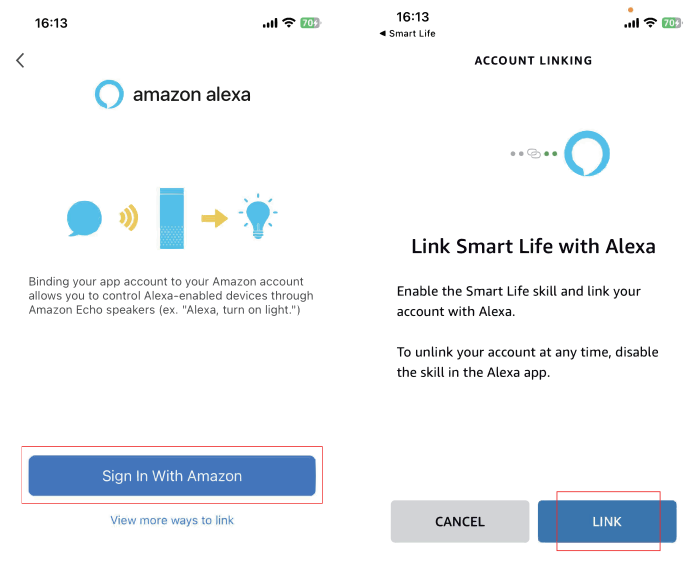


## How to connect to Alexa?

1. Open the Smart Life App, go to Home - Me - Third-party Voice Services - Alexa.

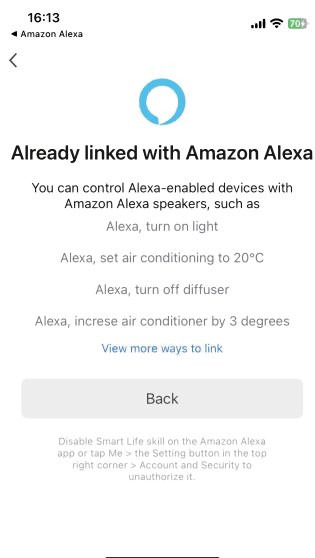


2. Click "Sign in With Amazon" and the Alexa App will be launched. Click "LINK" to complete the binding.



2. Now you can use Alexa to control your smart devices, you can say like:

Alexa, turn on /off <device name>



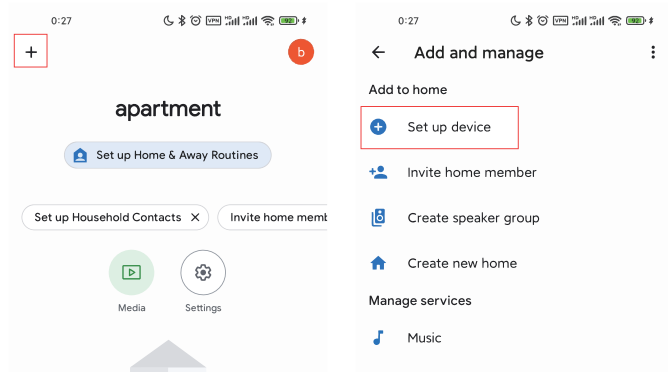
## How to connect to Google Assistant?

1. Make sure the smart device has been added to the Smart Life App and that the device is online.

2. Make sure the Google Home App is installed.

3. Open the Google Home App and tap the plus in the top left corner

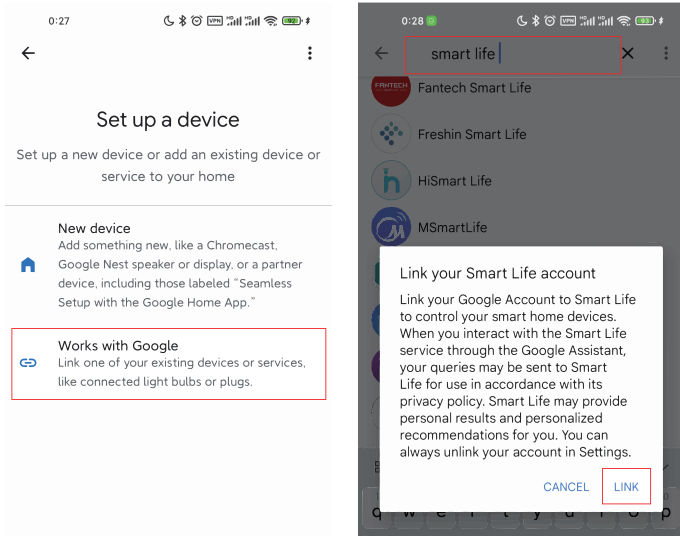
4. Click on Set up device



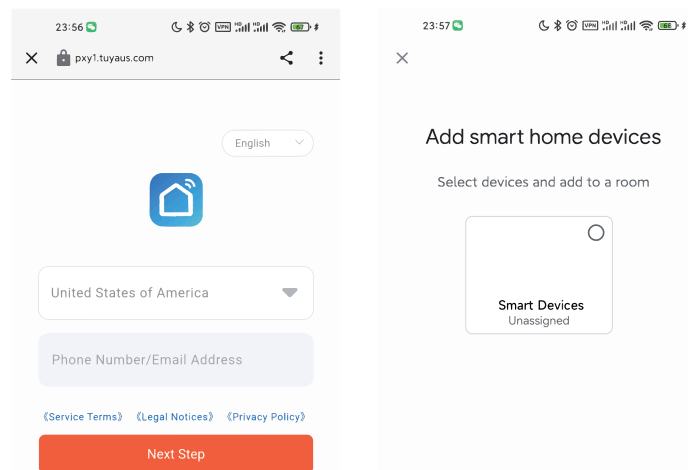
5. Click Works with Google

6. Search for Smart Life and tap Smart Life

7. Click Link



8. This will open the Smart Life App login page, you can enter the Smart Life App account password to complete the authorization



9. Now you can use Google Assistant to control your smart devices, you can say like:

OK Google, turn on/off <device name>

## FAQ

Q1. Why is the light flickering/cannot be controlled/cannot be turned off after the switch is installed?

A: It's often due to the capacitor that comes with the switch not being installed correctly. A capacitor needs to be added to the L1 circuit, and it should be installed at the light fixture end, rather than at the switch end.

Q2. Why is there a temperature difference between the temperature displayed on the switch and other thermometers in the room?

A: The room temperature may not be exactly the same as the temperature in other areas due to changes in the surrounding environment. For example, in a larger room, there may be greater temperature differences between areas near and far from an air conditioning vent.

Q3. How do I share a device?

A: Tap the setting icon in the upper right corner of the device panel. Select Share Device - and then click Add Sharing (You can check and manage the shared account here). It can be shared via an App account, email, or another method of your choice.

Thank you for your support and purchase, we are always here for your complete satisfaction, just free to share your great shopping experience with us.

CE FCC RoHS



Made In China