



Smart Breaker

1CH, 2CH, 3CH, 4CH

Installation and User Manual

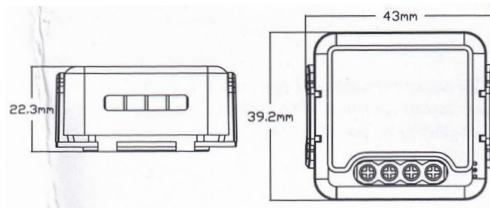


Please make sure to turn off the main power switch before installation.

TECHNICAL SPECIFICATIONS

Product type	Wi-Fi Switch Module
Voltage	AC100-240V 50/60Hz
Max. load	1CH: 10A/16A 2CH: 2×5A 3CH: 3×3.3A 4CH: 4×2.5A
Operation frequency	2.412GHz-2.484GHz
Operation temp.	-10°C ~ 40°C
Protocol	WiFi IEEE 802.11 b/g/n
Operation range	<100m
Dims (WxDxH)	39.2×39.2×18 mm
IP rating	IP20
Warranty	2 years
Certificates	CE ROHS

with mounting clip



INSTALLATION

1. Installation must be carried out by a qualified electrician in accordance with local regulations.
2. Keep the device out of reach of children.
3. Keep the device away from water, damp or hot environment.
4. Install the device away from strong signal sources such as microwave oven that may cause signal interruption resulted to abnormal operation of the device.
5. Obstruction by concrete wall or metallic materials may reduce the effective operation range of the device and should be avoided.
6. DO NOT attempt to disassemble, repair or modify the device.

FAQ

Q1: What should I do if I can't configure the switch module?

- a. Please check whether device is powered on.
- b. Make sure your mobile and switch module are under the same 2.4GHz WiFi network.
- c. Whether it's in good internet conditions.
- d. Make sure the password entered in App is correct. Make sure the wiring is correct.

Q2: What device can be connected to this Wi-Fi switch module?

Most of your household electrical appliances can be, such as lamps, laundry machine, coffee maker, etc.

Q3: What happens if the WiFi goes off?

You can still control the device connected to the switch module with your traditional switch and once WiFi is active again the device connected to module will automatically to your WiFi network.

Q4: What should I do if I change the WiFi network or change the password?

You have to re-connect our Wi-Fi switch module to the new WiFi network accordingly as per the App User Manual.

Q5: How do I reset the device?

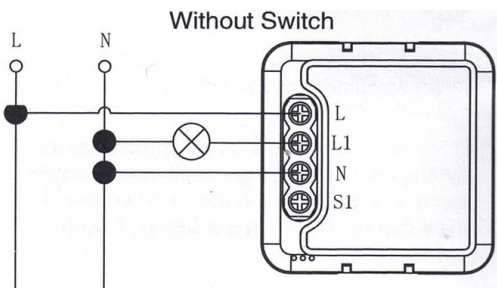
Power on/off device for 5 times until the indicator light flash.

Wiring Instructions and Diagrams

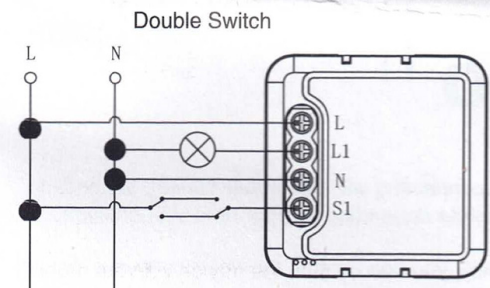
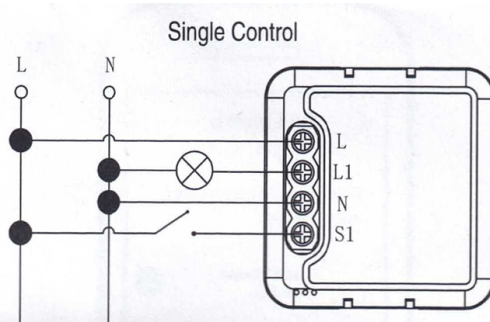
1. Turn off the power supply before carrying out any electrical installation work.
2. Connect wires according to the wiring diagram.
3. Insert the module into the junction box.
4. Turn on the power supply and follow switch module configuration instructions.

Notes:

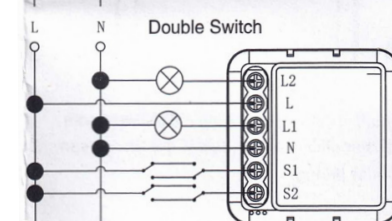
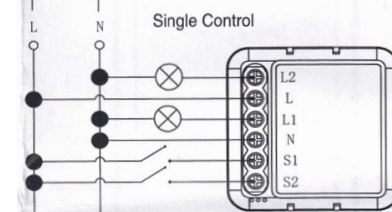
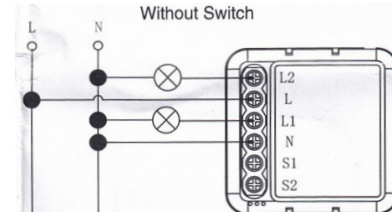
Take your smartphone close to the switch module when you're configuring, and make sure you have min. 50% Wi-Fi signal.



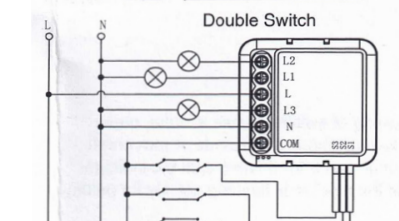
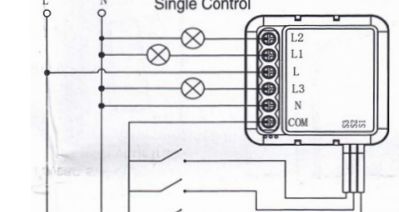
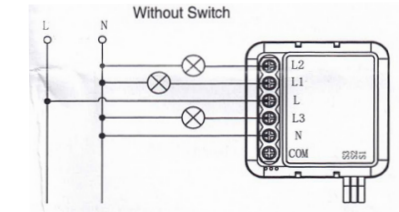
1CH Wi-Fi Switch Module



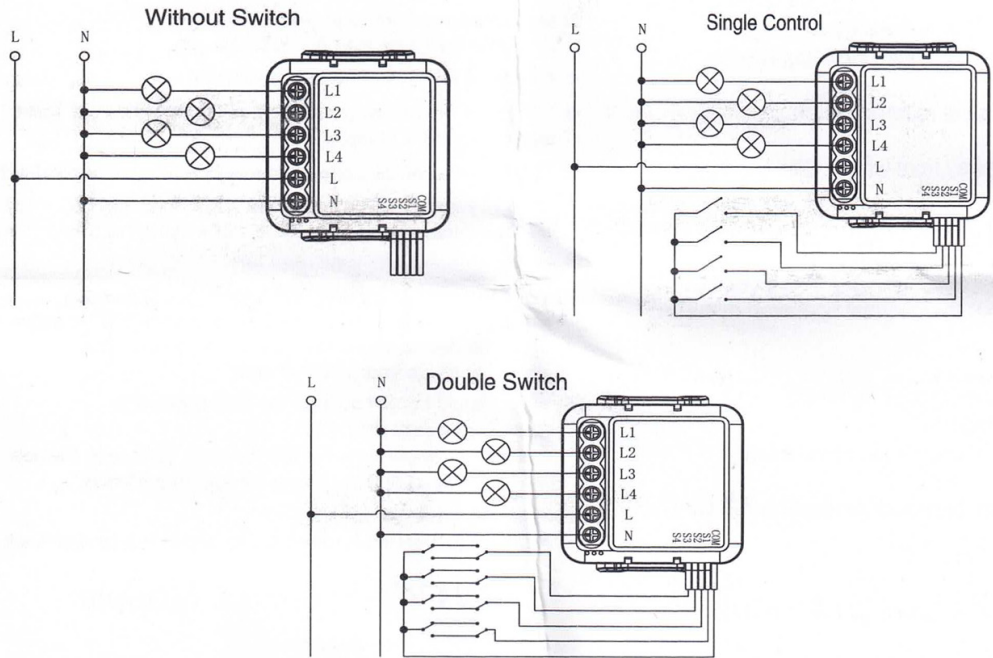
2CH Wi-Fi Switch Module



3CH Wi-Fi Switch Module



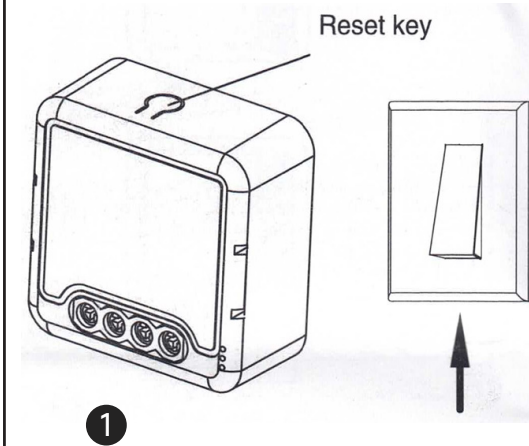
4CH Wi-Fi Switch Module



Download & Install the APP

1. Go to your App Store & search the "Smart Life" & install the app.
2. Input account name and password to login. If you don't have an account, please register an account first. System will identify your country automatically. You can use your mobile phone number as your account name.
3. Tap on "Next" to get a verification code via SMS on your mobile phone. Enter a desired password.
4. Tap on "Confirm" to finish your registration.

How to Connect with app

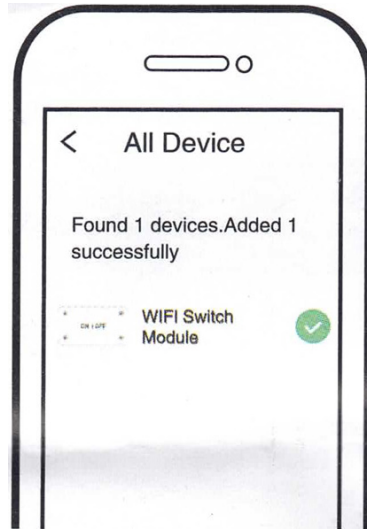


After the wiring of switch module is done, press the reset key for about 10 seconds or turn on/off the traditional switch for 5 times until the indicator light inside the module is flashing quickly for pairing.



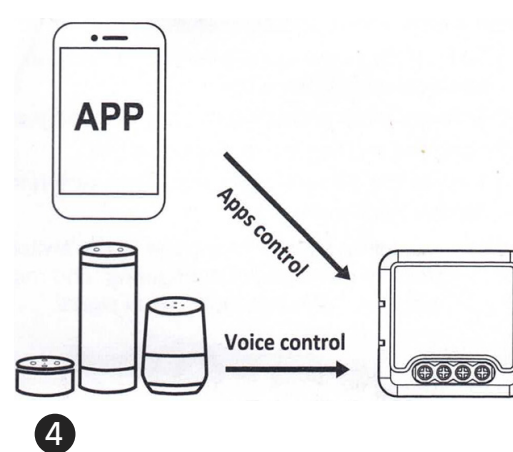
2

1. Support multi-protocol matching: WI-FI/Bluetooth.
2. Turn on Bluetooth, Click "+", follow the on-screen instruction for pairing.



3

The connecting will take about 10-120 seconds to complete depending on your network condition. Finally, you can control the device via your mobile phone.



4

Connect to Amazon Alexa or Google Assistant for voice control, or share the devices with your families or friends.

Enjoy your smart life of home automation for lighting control by using our All-in-One mobile app wherever you are in the world or simply by voice control when you are sitting at home comfortably.

Contact Information

Ledgebit Technologies Private Limited, 401, Vipul Trade Center, Sec 48, Gurugram, Haryana 122018

www.ledgebit.com

sales@ledgebit.com

+91-9810320256