



Smart Water Leak Detector

User Manual



Please read this manual carefully before use and keep it for future reference.

Product parameter

Input voltage: DC 3V CR123A

Quiescent current: $\leq 20\mu\text{A}$

Alarm current: $\leq 210\text{mA}$

Low-Voltage Indication: $\leq 2.6\text{V}$

WiFi: 802.11b/g/n

Detection method: water detection

Installation method: Mount on the ground

Working temperature: $-10^{\circ}\text{C} \sim +50^{\circ}\text{C}$

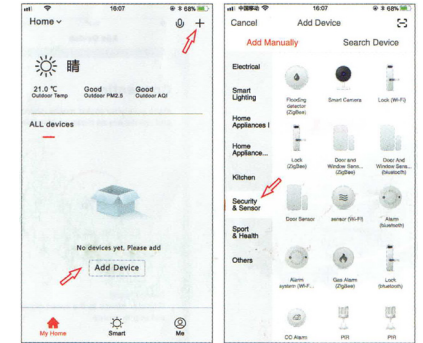
Working humidity: up to 95% RH

Download & Install the APP

1. Go to your App Store & search the "Smart Life" & install the app.
2. Input account name and password to login. If you don't have an account, please register an account first. System will identify your country automatically. You can use your mobile phone number as your account name.
3. Tap on "Next" to get a verification code via SMS on your mobile phone. Enter a desired password.
4. Tap on "Confirm" to finish your registration.

How to connect

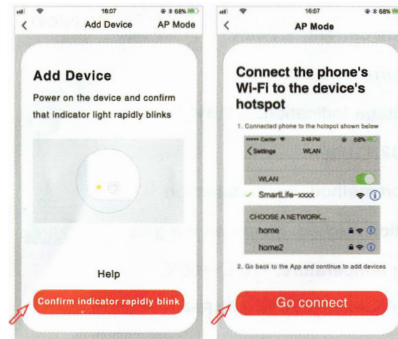
Register and log in to the APP with mobile phone number. Click "+" on the "My Home" interface or the middle blank "Add Device". Select the security sensor and click on the sensor.



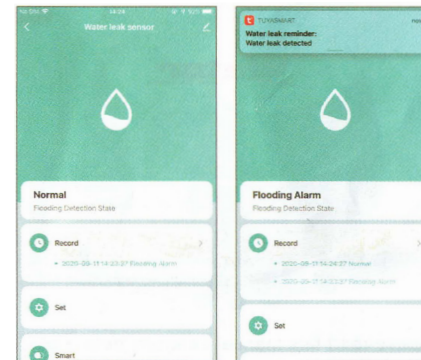
Register and log in to the APP with mobile phone number. Click "+" on the "My Home" interface or the middle blank "Add Device". Select the security sensor and click on the sensor.



In the automatic network configuration mode, if press and hold the reset button with the Pin card for 5 seconds to slow down flash of the indicator light as entering the manual network configuration mode. Choose the compatibility mode of APP (hotspot network configuration), and enter the "WiFi password" as prompted. Click to confirm and switch to the mobile WiFi setting interface, connect to the Smartlife_XXXX network and return to the APP to continue adding the device.



When network is paired successfully, click Water-Drop button and enter the interface. If the probe comes into water, water leakage logo will show: water is detected (Alarm every five minutes). If take it out, water leakage logo will show: Normal.



Contact Information

Ledgebit Technologies Private Limited,
401, Vipul Trade Center, Sec 48,
Gurugram, Haryana 122018

www.ledgebit.com

sales@ledgebit.com

+91-9810320256