

ledgebit® Smart Wi-Fi Smoke Sensor

User Manual



Please read this manual carefully before use and keep it for future reference.

Introduction

This product is a WiFi smoke sensor with temperature & humidity detection. It is capable of real-time detecting the presence of smoke. Once detected, the red LED of the sensor will turn on and alarm to alert you and your family in time. It can be widely used in household, lounge, coffee house, dancing hall, and other places which need fire alarm monitoring. Note: Such sensor cannot detect gas.

Specifications

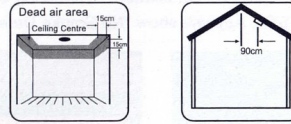
- Input voltage: DC3V LR03
- Static Current: $\leq 10\mu A$
- Alarm Current: $\leq 120mA$
- Low-voltage notification: $\leq 2.4V$
- Alarm Sound Level: 80dB / 1m
- WiFi: 802.11 b/g/n
- Detecting Range: 20m²
- Installation Method: Ceiling Mounted
- Working Temperature: $-10^{\circ}C - +50^{\circ}C$
- Working Humidity: $\leq 95\%RH$
- Size: 90 × 90 × 40mm

Flat Ceiling Mounting

The best location to install this sensor is in the centre of the ceiling because smoke, heat and combustible products rise to the ceiling and spread laterally. Keep at least 30cm distance from lights or decorations.

Sloping Ceiling Mounting

If the ceiling is sloping, install the sensor horizontal distance 90cm away from the ceiling top.

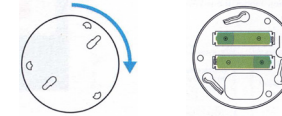


Recommended and Avoided Installation Position

Sloping Ceiling Mounting Position

How to use

Rotate the mounting bracket clockwise to remove it & prepare to install the battery. Insert 2 pieces AAA batteries, the LED indicator will turn ON then OFF.



"Test" button of smoke sensor is for self-check

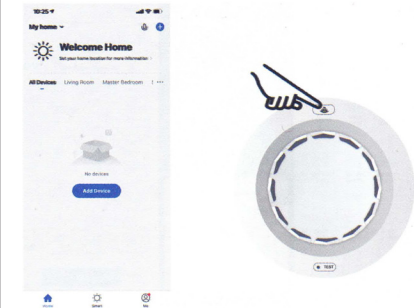


Download & Install the APP

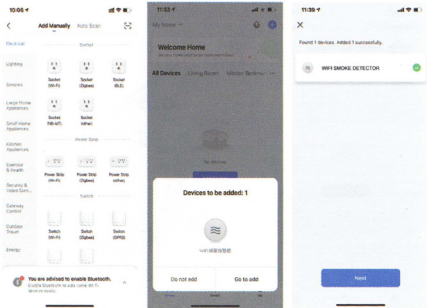
1. Go to your App Store & search the "Smart Life" & install the app.
2. Input account name and password to login. If you don't have an account, please register an account first. System will identify your country automatically. You can use your mobile phone number as your account name.
3. Tap on "Next" to get a verification code via SMS on your mobile phone. Enter a desired password.
4. Tap on "Confirm" to finish your registration.

There are two ways to connect WiFi with sensor

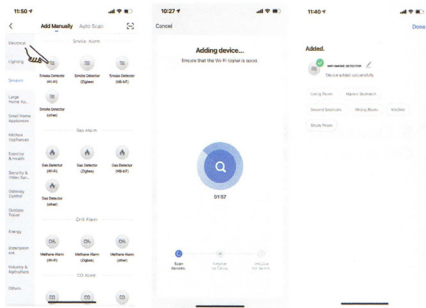
Bluetooth mode EZ Mode



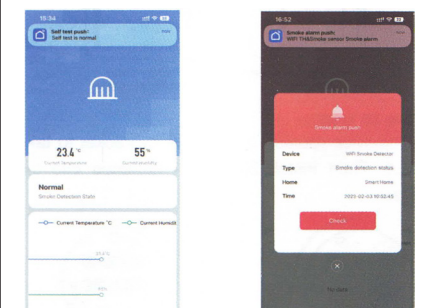
Bluetooth mode: Turn on Bluetooth → open Smart Life app → press and hold the sensor button for 5 seconds → the app will show Devices to be added → press Go to add → sensor connects automatically.



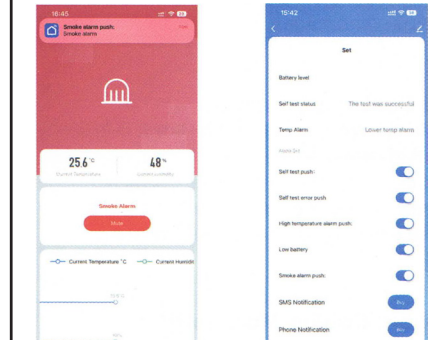
EZ Mode (Easy Connect): Click Add Device → Sensors → Smoke Detector (WiFi). Input WiFi password → press Next → confirm the indicator automatically → choose Blink Quickly → sensor connects automatically.



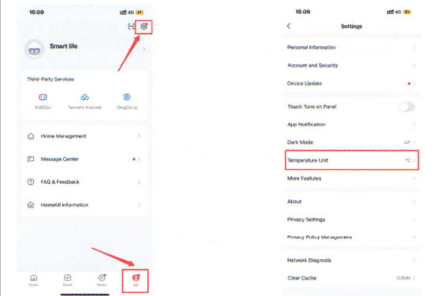
Self-check before use: After the sensor connects successfully to WiFi, Press the TEST button on the sensor. The alarm will sound "Di-Di-Di" and the app will receive notification "Self test is normal". If smoke is detected, the app will send "Smoke alarm" notification.



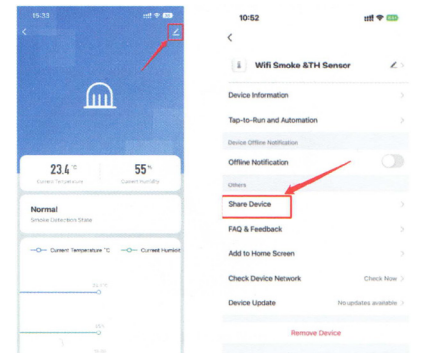
Press Mute to stop the alarm sound. Users can adjust the sensor sensitivity in the settings page. After adjustment, press the TEST button to update the sensitivity setting.



Temperature unit: You can select $^{\circ}C$ or $^{\circ}F$ in the app.
Intelligent linkage: When environmental conditions change, intelligent automation can occur. Ex: Air conditioner turns on when room temperature exceeds $35^{\circ}C$. Humidifier starts when humidity is below 20% RH. When smoke is detected, it can also trigger the siren alarm.



Share devices: You can share your added devices with your family members so they can also monitor the environment.



Contact Information

Ledgebit Technologies Private Limited,
401, Vipul Trade Center, Sec 48,
Gurugram, Haryana 122018

www.ledgebit.com

sales@ledgebit.com

+91-9810320256