

# Smart Multi-Function Switch

Installation and User Manual



Please make sure to turn off the main power switch before installation.

### Chapter 1 Product introduction

1.1 Appearance view

1.2 Product features and application scenarios

### Chapter 2 Product function and configuration

2.1 Parameter configuration

2.2 Function introduction

### Chapter 3 Interface and specification parameters

3.1 Function interface and description

3.2 Interface Description

### Chapter 4 Installation instructions

4.1 Installation instruction

### Chapter 5 Basic usage instructions

5.1 Safety instruction \*\*\*\*\*

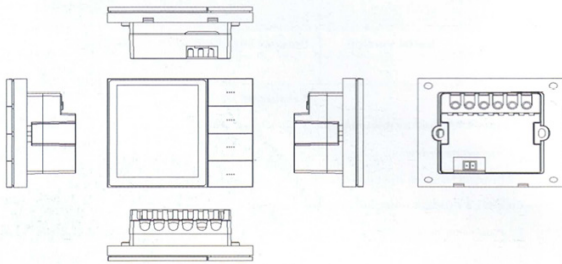
5.2.1-5.2.6 Product operation instructions

5.3.1-5.3.7 Instructions for the physical operation and use of the product

### Chapter 6 Warranty description

## Chapter 1 Product Introduction

### 1.1 Appearance view



### 1.2 Product features and application scenarios

- 86 into the wall type hidden installation structure, easy installation mode, no need to transform the wall, any collocation.
- Smart home interconnection, situational mode, device automation, remote APP control.
- It can easily realize the precise control of intelligent devices such as lights, curtains, air conditioners, etc., without hands, compatible with some TUYA ecological devices.
- You can customize a linkage scenario to quickly change the scenario mode.

## Chapter 2 Product Function and Configuration

### 2.1 Parameter configuration

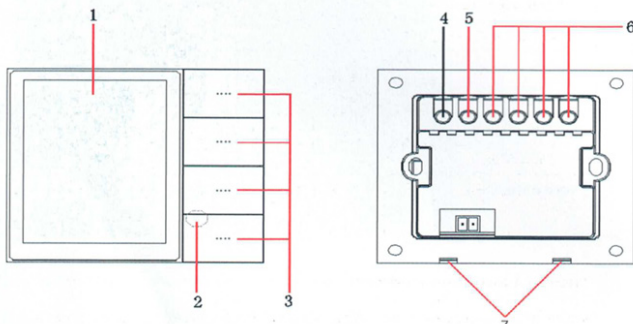
Parameter Configuration Table			
System	Melis	Screen	3.5-inch 320×480 resolution
Relay	Single channel ≤4*500W	Power input	AC 100V-250V (50HZ)
Zigbee	802.15.4 PHY/MAC Zigbee network protocol stack	RS485	Full duplex 3.5MM interface terminal (reserved interface)
Outer shell	ABS+PC	Radar	Body sensing: X-band radar RF with micro/motion sensing
Functional Support			
Local switch	Support local 4-way switch, can be used for room lighting line use, such as living room lights, bookcase lights, etc.		

### 2.2 Function introduction

1. 4-way composite switch, ordinary switch scene switch any switch.
2. App to modify the switch or scene name, automatically synchronized to the switch LCD display.
3. 3.5-inch LCD display, 320 × 480 resolution.
4. Time calendar, weather information screensaver function.
5. Millimeter wave human body sensing radar.
6. Support power on and off.
7. Support Zigbee wireless connection.
8. RS485: can support external input control, also can output control external intelligent devices. (need to be customized)

## Chapter 3 Interface and Specification Parameters

### 3.1 Function interface and description



#### External Interface Description

1. Display screen
2. Human body sensing
3. Local switch key 1-key 4
4. Zero line: AC 90V-250V connect to zero line
5. Fire wire: AC 90V-250V to fire line
6. Control line: 4-way switch control line, single less than 500W
7. Disassembly port: pry open the gap for disassembling the face shell fixing screws.

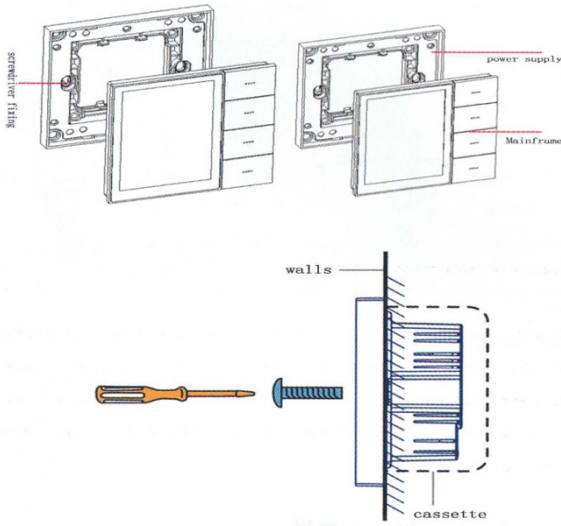
### 3.2 Specification parameters

Item	Specification
Input Voltage	100-240VAC, 50/60Hz
Wireless protocol	Zigbee
Operating Temperature	0°C-40°C
Operating Humidity	5%-90% RH non-condensing
Product Size	86×86×11.9mm (without base) / 86×86×40.6mm (with base)

## Chapter 4 Installation Instructions

- Turn off the main power switch, and confirm that the fire line in the cassette is not live with the measuring pen.
- Remove the back seat and install it in the cassette (as shown).
- Check the wiring to ensure that the copper wire is in good contact with the terminal post, and there are no exposed wires.
- Secure the base to the inside of the cassette with mounting screws and fasten back the panel.
- Note that the screws should not be tightened too tightly during installation, so as not to cause deformation or damage to the screen and hardware.
- If the installation encountered problems, must not vigorously press forced installation, should first level the wall, check the support.

## 4.1 Installation Instructions



Suitable for JB/T 8593 standard plastic cartridges, cartridges depth  $\geq 50\text{mm}$ .

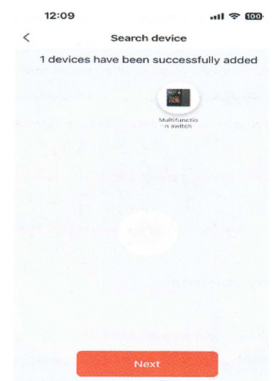
## Chapter 5 Basic Usage Instructions

### 5.1 Safety instruction \*\*\*\*\*

- In order to ensure proper use of this product, this product must be installed or disassembled by a professional electrician.
- Before installing or disassembling this product, the main power brake must be cut off to prevent electric shock.
- This product should be kept away from fire and water sources during installation and use.
- This product should not be used in humid environments (such as bathrooms).

### 5.2 Product operation instructions

5.2.1 When the product is powered on, it will automatically turn on. Long press any key of the switch for more than 5 seconds, the key indicator light will flash yellow and white alternately, and the device will enter the state of network distribution. At this time, open the APP, enter the gateway-add sub-device, you can search the "multi-function control panel" intelligent composite switch.

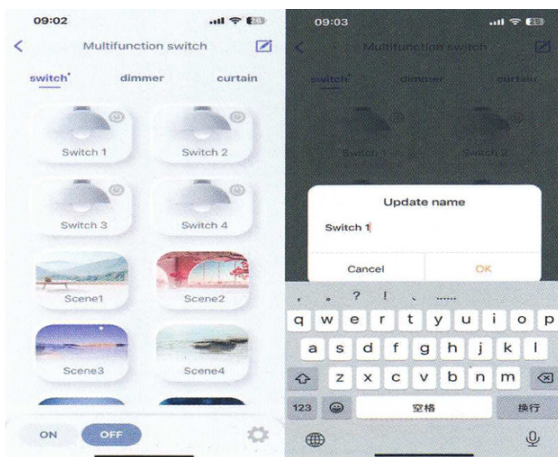


#### 5.2.2 Switch Name Setting

In Tuya smart app, select "Multi-function control panel" smart composite switch.

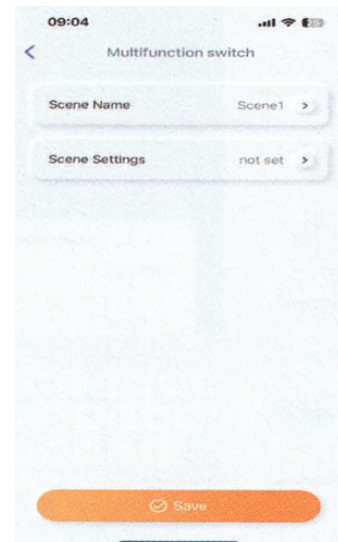
Under "Local Switch"/"Scene Switch", long press the switch/scene (Switch 1-Switch 4/Scene 1-Scene 8) to jump to the editing page, edit the switch name under the "Switch Name" column, click Save when you finish editing, and the switch will automatically display the edited name synchronously.

The switch name can be up to 4 Chinese characters or 4 mixed Chinese/English characters.



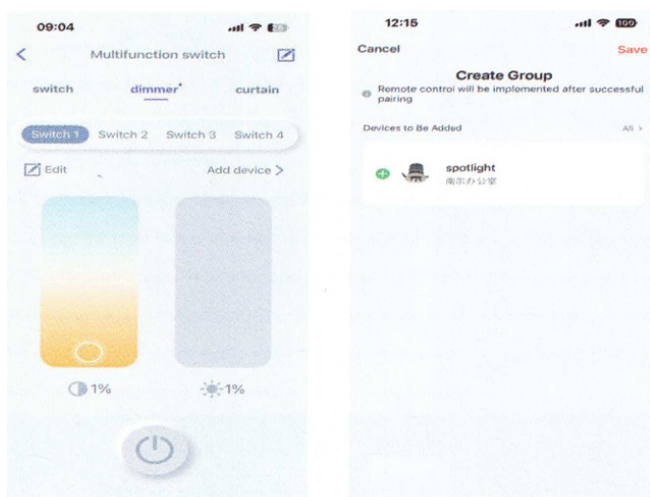
#### 5.2.3 Switch Scene Setting

Switch 1 to switch 4 corresponds to the physical key 1 to key 4, control the host 4-way relay switch, scene 1 to scene 8 is the default scene, long press to enter the editing interface to select the desired scene to add and save the synchronization data.



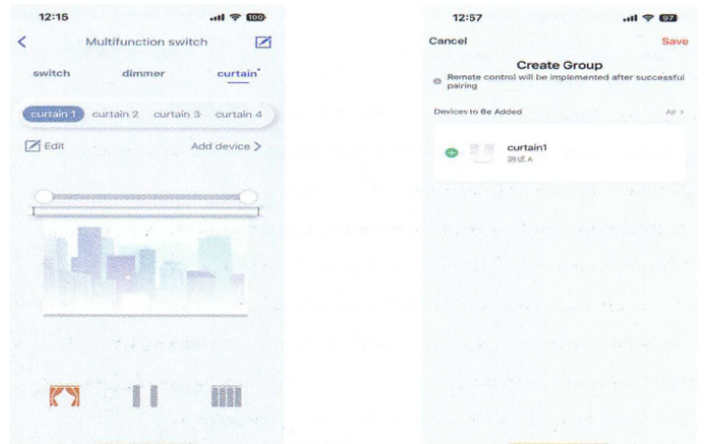
#### 5.2.4 Dimmer switch settings

APP choose dimming interface, light one to light four, click below to add equipment to enter the management group, select the group you need to add to save, return to the previous level to edit the name to modify the name of the scene.



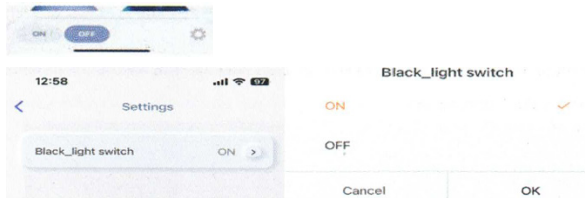
#### 5.2.5 Curtain settings

APP select curtain interface, curtain one to curtain four, click on the bottom of the add device to enter the management group, select the need to add the group to save, return to the previous level to edit the name to modify the name of the scene.



### 5.2.6 Other Settings

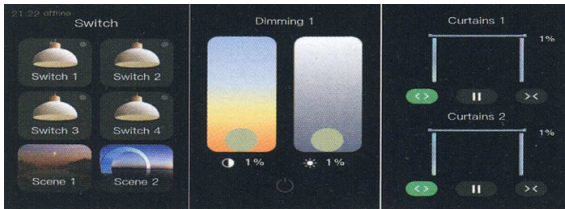
On the switch page, click the settings icon in the lower right corner to enter the settings page.



Backlight switch: turn on or off the backlight (turn on the bright screen backlight / turn off the screen backlight). Backlight on and off once can be manually synchronized once the time date weather information.

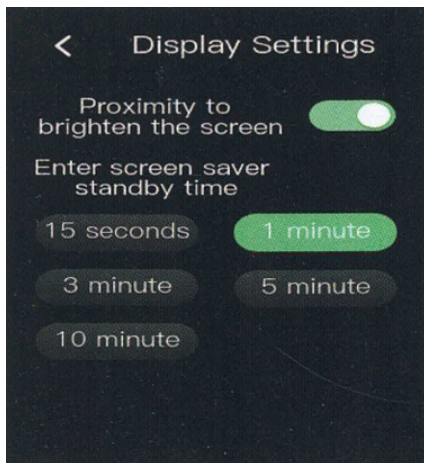
### 5.3 Instructions for the physical operation and use of the product

5.3.1 The first interface is the default interface, displaying 4-channel local switch & 8-channel scene (page down for scene 3 to scene 8). Slide left for the dimming interface (page up & down to switch from dimming 1 to dimming 4). Slide right for the curtain interface (page up & down to switch from curtain 1 to curtain 4).



### 5.3.4 Display Settings

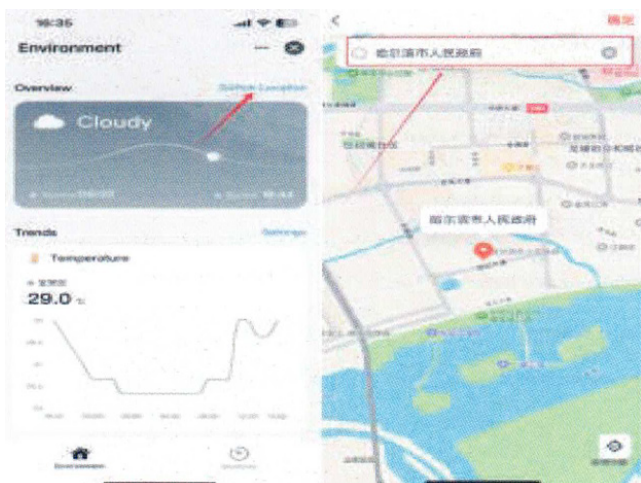
1. Close to the screen (switch on the default open radar, when the set screen saver time arrives the host will automatically rest, when someone is close to the screen automatically light up).
2. Screen saver duration (set the time to enter the screen saver, default 1 minute can be set for 15 seconds, 1 minute, 3 minutes, 5 minutes, 10 minutes and other different times).



### 5.3.7 Synchronisation of time and date with the weather

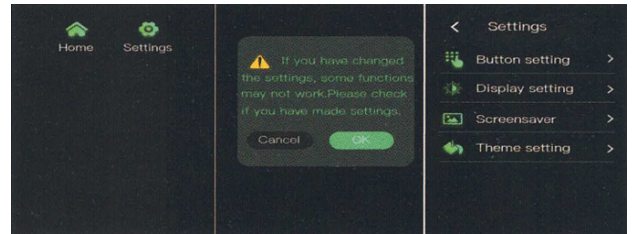
Open the homepage of DoodleSmart app, click "Comfort Space", set your city, the system will automatically get the "time zone information" & "weather information" according to the location and display them on the screen saver of F3-pro.

(Wired gateway version v1.24.2)



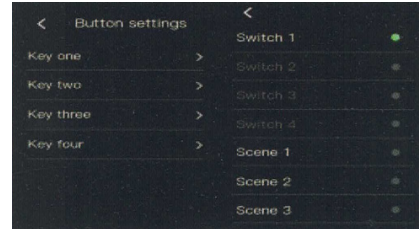
### 5.3.2 Setting Function Options

Slide down from the top to bring up the Settings pop-up, click Settings to confirm and enter the Settings screen.



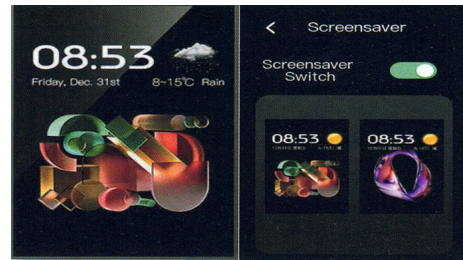
### 5.3.3 Key Setting

Click key setting to enter the setting interface, the default key one to key four for the local switch, also can be set as a scene switch, select switch 1 to switch 4 to enter the function selection interface, can be set to other scenes, such as scene one to scene eight.



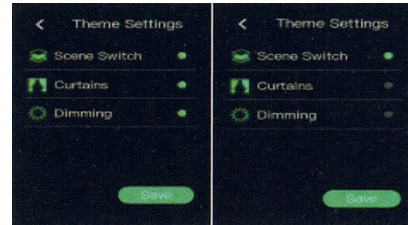
### 5.3.5 Screen saver setting

Screen saver switch. After switching on the screen saver switch, the host will enter the automatic screen saver when it has not been operated for 1 minute. After switching off the screen saver switch, the host will automatically rest the screen when it has not been operated for 1 minute.



### 5.3.6 Theme setting

The default scene switch interface of this function is the home page, and it cannot be closed or hidden. Curtains and dimming interface can be set to close according to demand. After closing, this function will not be shown on the display interface. You can hide it by selecting Save in Theme Setting.



## Contact Information



Ledgebit Technologies Private Limited,  
401, Vipul Trade Center, Sec 48,  
Gurugram, Haryana 122018



[www.ledgebit.com](http://www.ledgebit.com)



[sales@ledgebit.com](mailto:sales@ledgebit.com)



+91-9810320256