



Smart Plug

User Manual



Please read this manual carefully before use and keep it for future reference.

Product Information

Electrical Rating: 100-250V AC, 50Hz

Working Temp: -20~50°C

Wireless Type: WiFi 2.4GHz & Bluetooth

App Support: iOS / Android

Warm Tips

- Support 2.4GHz Wi-Fi and Bluetooth
- Simplified steps to install App on your smart phone or tablet on Apple/Google Play Store
- Works with Amazon Alexa, Google Home
- For indoor use only

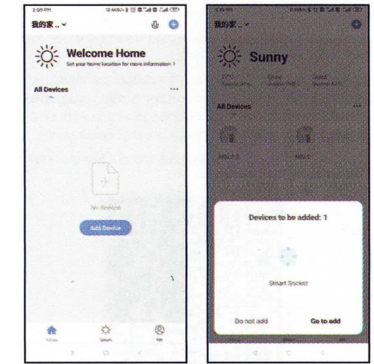
Download & Install the APP

1. Go to your App Store & search the "Smart Life" & install the app.
2. Input account name and password to login. If you don't have an account, please register an account first. System will identify your country automatically. You can use your mobile phone number as your account name.
3. Tap on "Next" to get a verification code via SMS on your mobile phone. Enter a desired password.
4. Tap on "Confirm" to finish your registration.

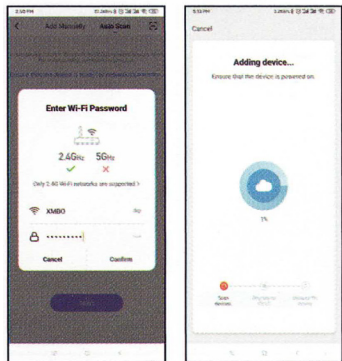
Connect with mobile phone (Auto Scan)

1. Turn on the smart phone or device Bluetooth function and ensure the smart phone or device network is ON.
2. Before connecting, please make sure your smart phone or device is connecting with your home Wi-Fi 2.4GHz successfully.
3. Make sure quick mode configuration is initiated: the indicator light blinks blue rapidly (twice per second). If it blinks blue slowly (once every 3 seconds), press and hold the power button on the Smart Plug for 6 seconds until the indicator light blinks rapidly.
4. Open the application, click "+" to select "Auto Scan Mode", and then start to automatically scan products that can be connected.
5. Once connected, the App will prompt the connection, then click "Done".

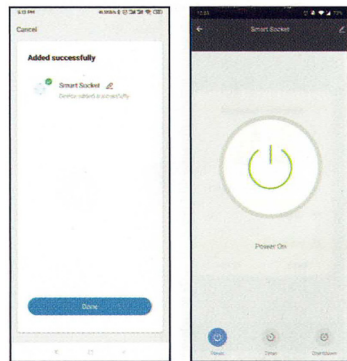
- ① Into the home page ② Auto Scan



- ③ Enter the Wifi password ④ The equipment connected to the Internet



- ⑤ Distribution network success ⑥ Jump to the user panel



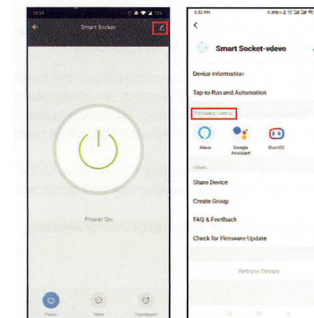
Connect with mobile phone (Add Manually)

1. Turn on the smart phone or device Bluetooth function & ensure the smart phone or device network is ON.
2. Before connecting, please make sure your smart phone or device is connecting with your home Wi-Fi 2.4GHz successfully.
3. Make sure quick mode configuration is initiated: the indicator light blinks blue rapidly (twice per second). If it blinks blue slowly (once every 3 seconds), press and hold the power button on the Smart Plug for 6 seconds until the indicator light blinks rapidly.
4. Open the app, scan QR code and see the guideline of pairing mode.

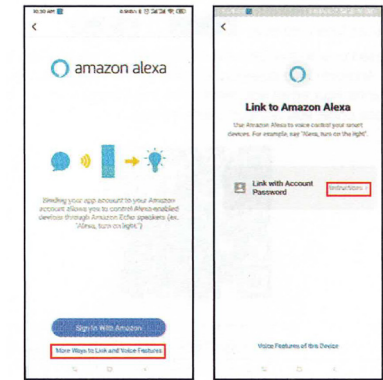


Support 3rd Party Control

- ① Type the edit menu of the user panel. ② Select the third-party application to be operated.



- ③ Follow the instructions in the tutorial to connect and use.



FCC Statement

This device complies with part 15 of the FCC Rules. Operation is subject to the following two conditions:

1. This device may not cause harmful interference, and
2. This device must accept any interference received, including interference that may cause undesired operation.

RF Exposure Information

The device has been evaluated to meet general RF exposure requirement. The device can be used in portable exposure condition without restriction.

Warm Tips (Troubleshooting)

Please check whether the device is connected with power and your phone is connected with Wi-Fi.

Check routers: If the router is dual-band router, please select a 2.4GHz network to add device. You also need to open the router broadcasting function.

Set up the wireless router: Set encryption method as WPA2-PSK authorization type as AES, or set both as auto. The wireless mode cannot be only 5GHz. Please name router Wi-Fi in English. In order to stay strong Wi-Fi signal, please keep device and router within a certain distance.

- Check whether connected devices have reached the maximum number router connection. If so, please try to turn off Wi-Fi connection of some devices.
- Make sure router wireless MAC filtering function is enabled.
- Remove the device from the filter list and make sure that router is not prohibiting device from connection.
- Make sure the entered password is correct when adding a new device.



Made in China / In China hergestellt

Contact Information

Ledgebit Technologies Private Limited,
401, Vipul Trade Center, Sec 48,
Gurugram, Haryana 122018

www.ledgebit.com

sales@ledgebit.com

+91-9810320256