



Smart Door Lock

Operation Instruction Manual



Please read this manual carefully before use and keep it for future reference.

Download & Install the APP

Factory Default Mode

- Any fingerprints / Password / Card can open the lock.
- Press the lock and unlock buttons simultaneously for 3 seconds, the system will be set to factory default mode.

Install menu

In factory default mode, press touch keypad 888#, system will enter install menu.



Please press the corresponding number keys to set the functions:

- Lock direction: Left / Right
- Force: High / Mid / Low
- Invert time: 150ms-500ms
- Open Time: 2s-8s

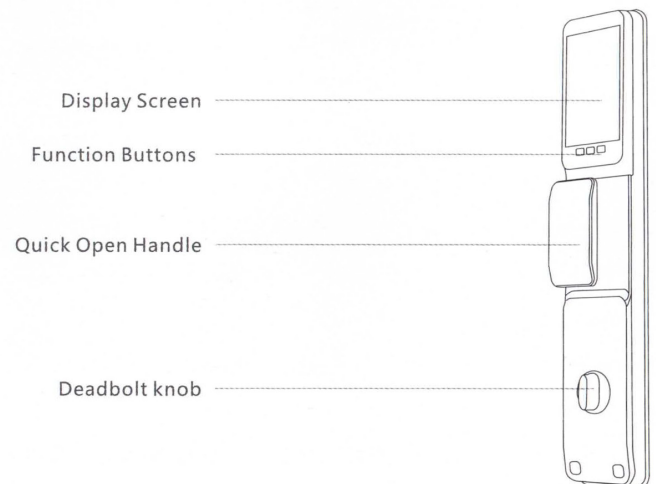
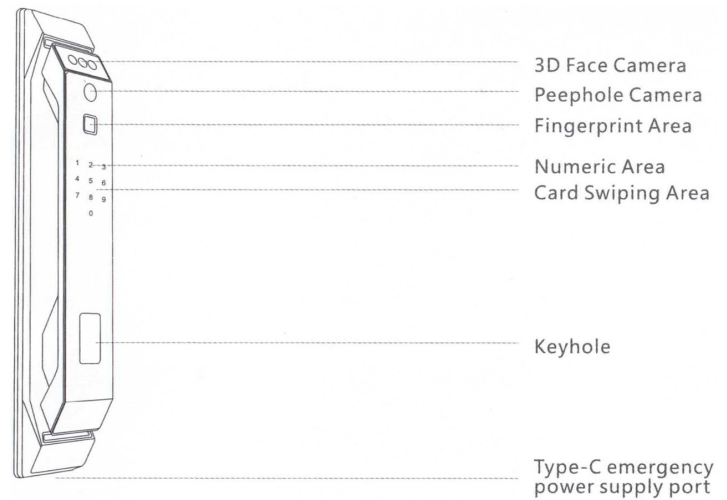
Language setting (In factory default mode)

Shortcut Keys	Language	Shortcut Keys	Language
7100#	Chinese	7108#	Indonesian
7101#	English	7109#	Brazilian Portuguese
7102#	Arabic (UI is English)	7110#	French
7103#	Russian	7111#	Hebrew
7104#	Portuguese	7112#	Turkish
7105#	Thai (UI is English)	7113#	Kazakh
7106#	Spanish	7114#	Uzbek
7107#	Vietnamese	7115#	German

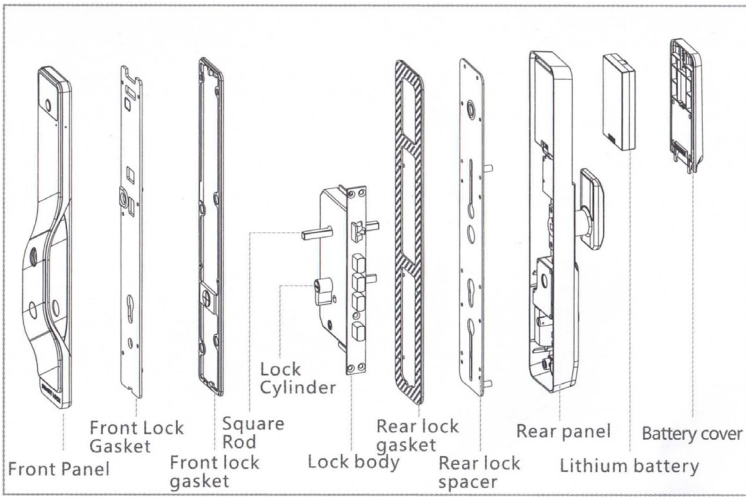
Parameters

Power	DC 7.4V
Low power alarm	<6.9V
Emergency supply	5V (TYPE-C USB)
Quiescent current	<110uA (excluding camera)
Network	2.4G WiFi
Motor	8VDC
Keypad	Capacitive touch 13 keys (0-9, *, #, lock door key)
Backlight	White
Front display	0.96 OLED
Front speaker	8R1W
Back speaker	8R1W
User capacity	250 (Face + Palm + Fingerprint + Password + Card)
Face & Palm capacity	50
Fingerprint capacity	100
Card type	Mifare / NFC
Card reading distance	0-40mm
Human body sensing	Radar detection
Facial recognition range	Adjustable from 0.8m to 1.5m
Working temperature	-20°C ~ 60°C
Working humidity	10% ~ 90%, no condensation
Storage temperature	-30°C ~ 70°C
Anti-static ability	Contact discharge ±8kV, Air discharge ±15kV

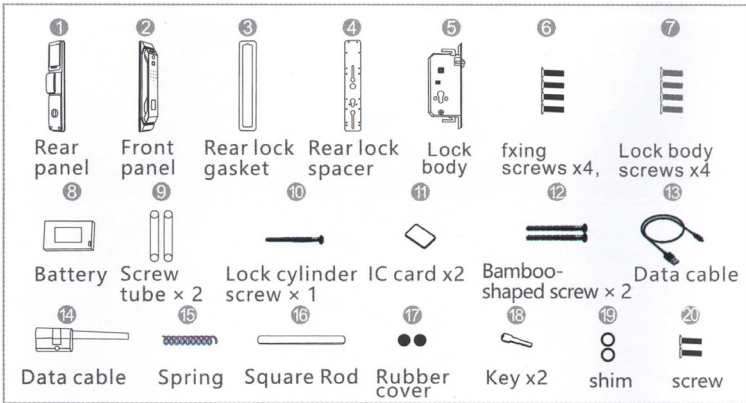
Product Overview



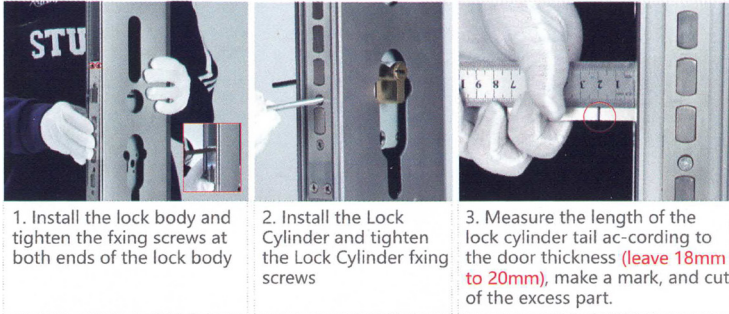
Door Lock Diagram



Accessories



Install the Lock Body and Lock Cylinder

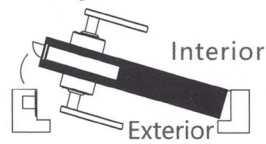


Door Lock Installation Guide

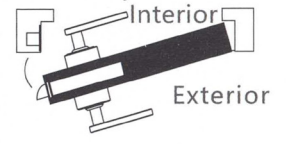
Confirm the Door Opening Direction

① Right Opening

Correctly inward

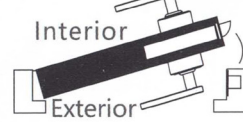


Correctly outward

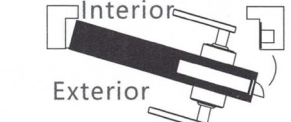


② Left Opening

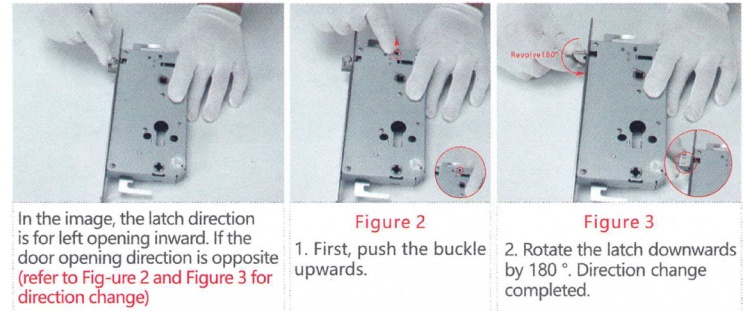
Left inward



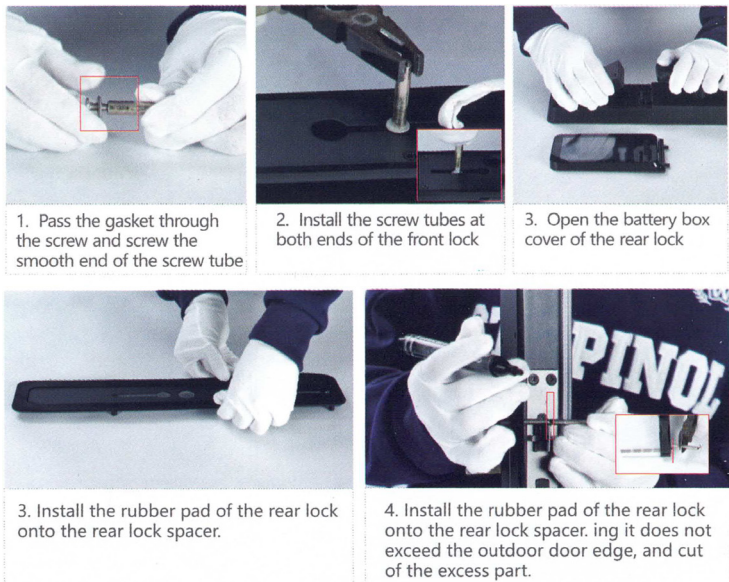
Left outward



Change the Lock Body Direction



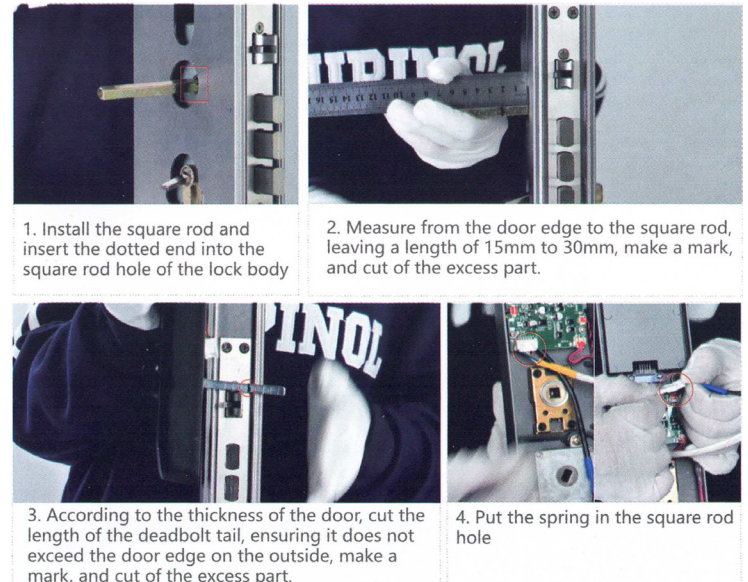
Preparation Work for Installing Front and Back Locks



Install the Lock Body and Lock Cylinder

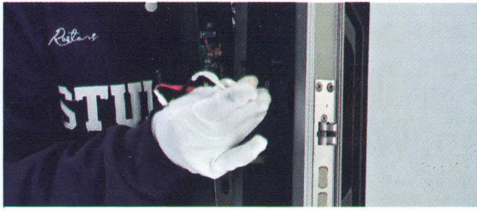


Install the Front Plate

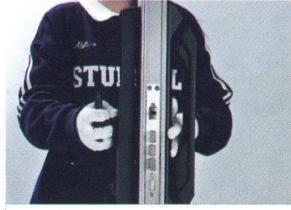




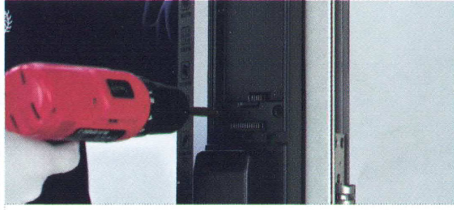
5. Connect the power cord of the front lock and the cat's eye line



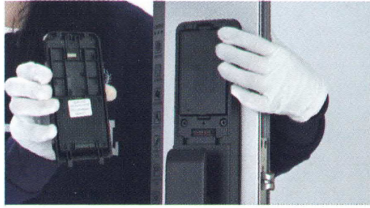
6. Organize the excess wire and tuck it into the door gap.



7. Align the square rod and tail ruler to install the rear lock.



8. Tighten the fixing screws and insert the rubber plug.



9. Insert the battery and cover the battery compartment.



10. Press and hold the "on/off key" of the rear lock at the same time until the prompt sound sounds, and press the "#" key on the front lock to restore the initialization, and the installation is complete

Contact Information



Ledgebit Technologies Private Limited,
401, Vipul Trade Center, Sec 48,
Gurugram, Haryana 122018



www.ledgebit.com



sales@ledgebit.com



+91-9810320256