

# Multi-Function 4-Gang Smart Switch Control Panel

## Installation and User Manual



Please make sure to turn off the main power switch before installation.

### Product Introduction and parameter list

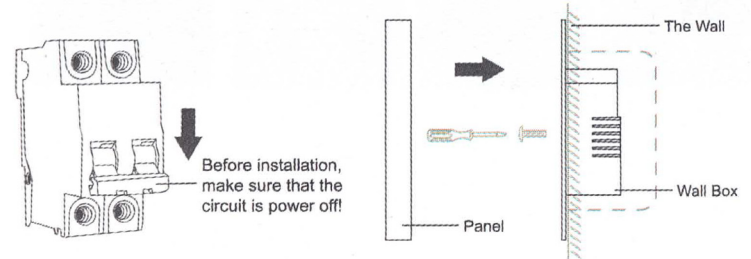
- This is a 3 Gang(EU)/4Gang(Asia) standard wall switch with built in relay to control the lighting loops,after connecting with smart life Zigbee gateway, it can be the scene control panel.
- It offers 8 key scene mode controls on the first page, and it's with 4 groups of Zigbee dimming light controlling for brightness and 3000K to 6000K temperature adjustment and 4 groups curtain controlling.
- The group name and curtain status can be synchronous from the APP automatically.

CPU	RISC-V,E907,400MHz
Storage space	16MB
Memory	8MB
Operating system	RT-Thread
Display screen	4-inch capacitive screen IPS
Resolution	480*480
Operation	Touch
Operational Voltage	AC 110V-230V 50/60Hz
Wireless Standard	Zigbee 3.0
Frequency	2.4GHz
Rated Power	200W/Gang

### Installation safety tips



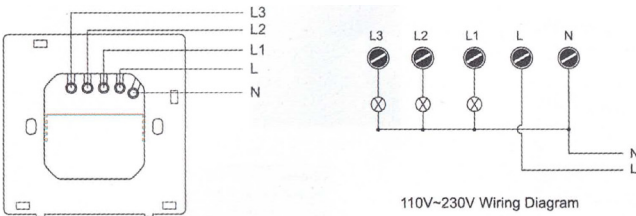
It is recommended that the installation be performed by professionals such as electricians.



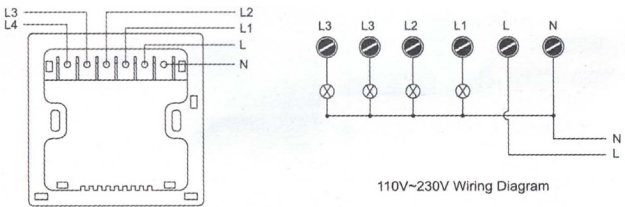
This product should be kept away from fire and water during installation & usage. This product can not be used in Moistures,such as bathroom.

### The switch wiring diagram is as follows

#### 3-gang relay switch wiring diagram

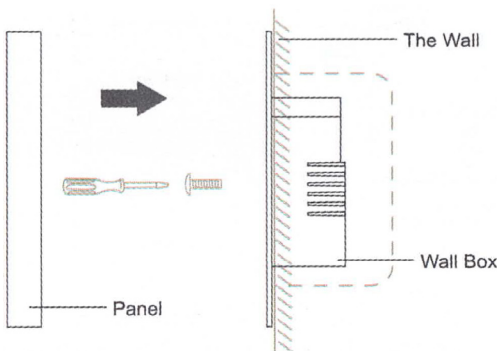


#### 4-gang relay switch wiring diagram



Note: Make sure the circuit power were cut off before wires connections!

### Installation diagram



### Download Mobile APP application

You can download the "Smart Life" app by searching for it in the app store or by scanning the QR code provided below:



After downloading smart life APP, you need register an account.

### Pair the smart life zigbee gateway to APP firstly

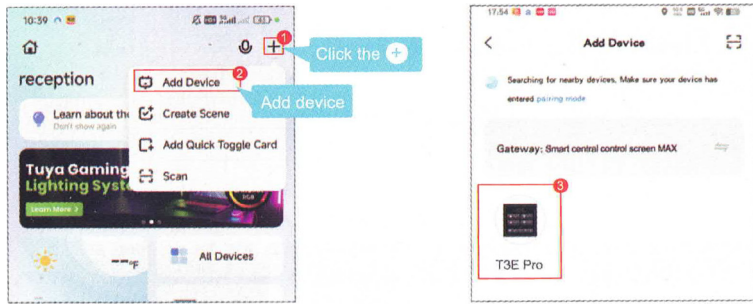
Before integrating the switch screen panel into the app, the user must firstly add the Zigbee gateway to the app. Here are some examples of Smart Life Zigbee gateways.



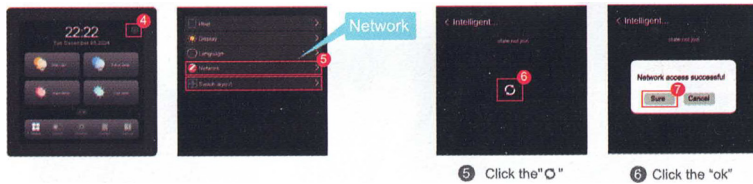
## Add the screen switch panel to smart life APP

To get started, simply create an account on the Smart Life app and add the Zigbee gateway. Then, follow these steps to add the smart screen switch:

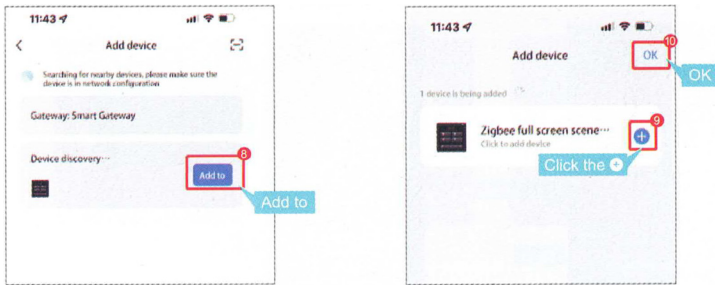
After that add the switch as right side picture.



Once the app is accessed and the Zigbee switch device interface is displayed, please follow these steps to pair the switch with the app:



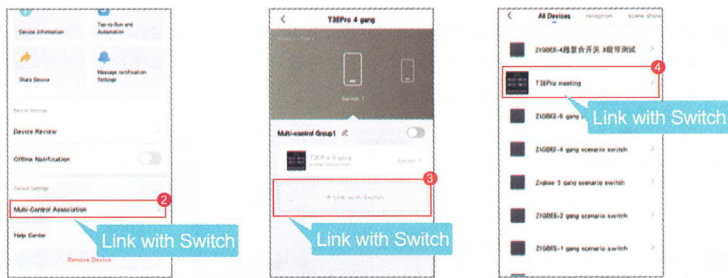
Once the Zigbee screen switch appears on the App's search interface, click "add to" to complete the pairing process.



To enable the dual/multi-control switch function, open the T3E switch control interface in your mobile app and click the "edit" button.



To proceed, click on "Multi-Control Association" and then add the additional smart switch for multi-control on the next page.



## How do I set the eight scene modes on the first page of the smart screen?

1 The smart screen offers 8 scene modes on the first page. Users can customize these settings via the mobile app.

2 The user needs to create a scene mode using the "Tap-to-Run" function on the mobile app.

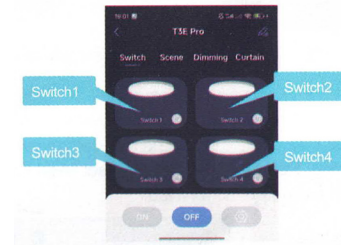


## Set the 3-Gang/4-Gang switch to control the lighting loop

Once you've wired the switch with a 4-way lighting circuit (using the wiring diagram provided on the first page), you'll be able to control the on/off of the 4 groups of lights independently.

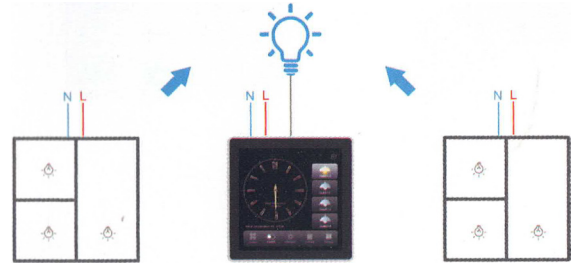


User can rename each gang of Switch on mobile APP easily.

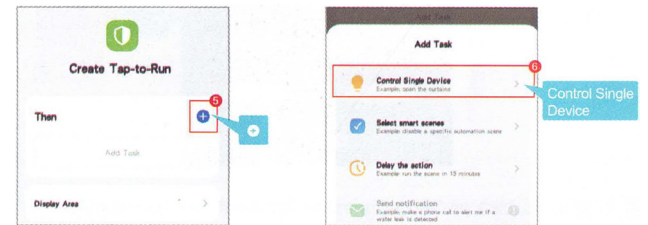


## How to set up Dual Control/Multi-Control of Built-In Switches?

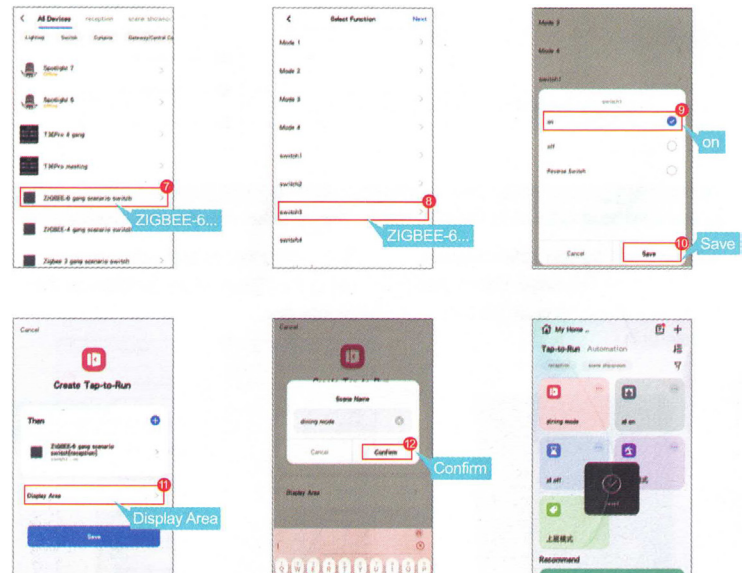
You can utilize the mobile app to configure dual or multi-control between two or more switches.



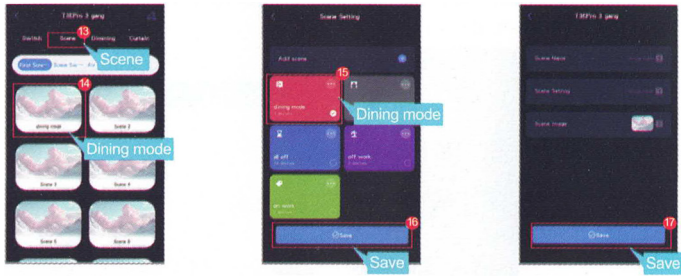
To set up "IFTTT" on the "Tap-to-Run" page of the app, for instance, you can create a "Back home mode" that will simultaneously turn on all lights and open all curtains.



Once all the settings are completed, the user can establish a connection between the scene buttons on the smart screen APP scene setting interface and the pre-set scene mode.



To finalize the setup, please sync the app with your smart screen. This will ensure that the scene mode and settings are accurately displayed on the screen.

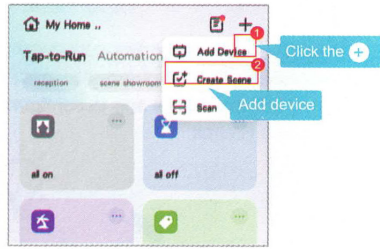
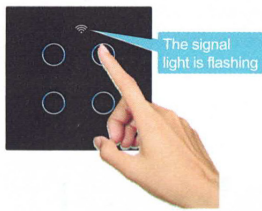


### Wireless zigbee Switch controlling

#### The wireless zigbee switch control

User can enhance this smart screen by adding an extra wireless Zigbee switch for controlling.

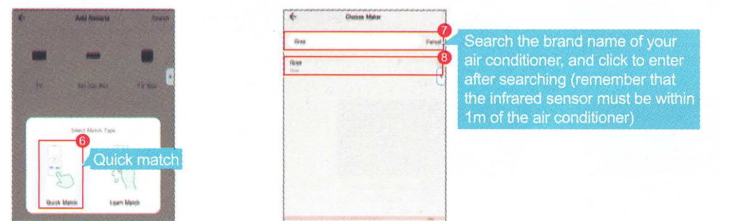
- To activate the switch, hold down any button for 15 seconds until the indicator light starts flashing. Release the button, and the switch will enter "setting" status.
- Quickly open the "Smart Life" app, click the "+" icon on the right corner, and then select "Add Device" to move forward.



### Zigbee IR blaster controlling

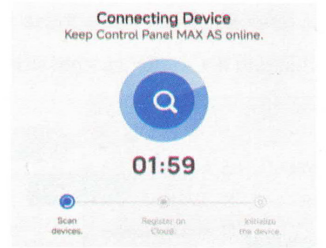
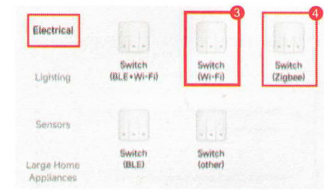
You can control the split air conditioner via the screen, once you've programmed the Zigbee IR controller.

To link the Zigbee IR Blaster with the Smart Life App, just follow these easy steps.



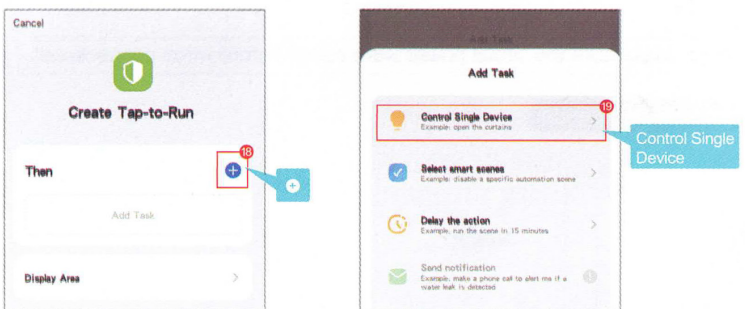
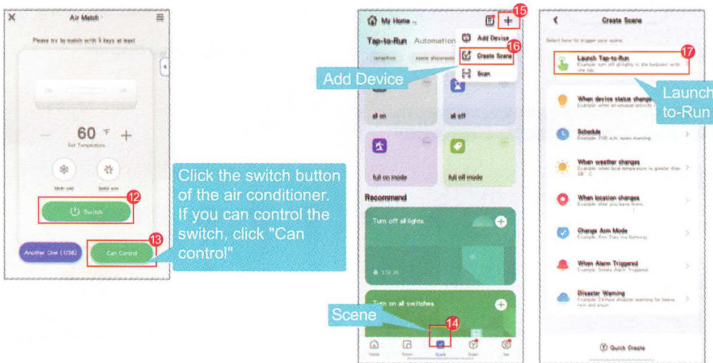
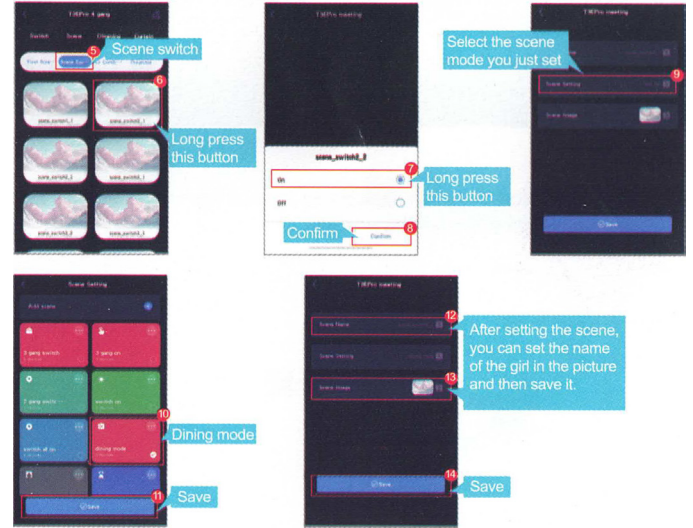
- When connecting to a WIFI switch, select 3
- When connecting to a ZigBee switch, select 4

- Waiting for device connection



Once the code has been successfully applied, the user will need to establish a connection between each button on the Zigbee switches and the wireless switch control interface on the smart screen, use "Tap-to-Run" to finish building the relation, you can refer to Step 8 for guide.

Once the "Tap-to-Run" setting is complete, the user can return to the Screen Switch APP setup interface to finalize the connection settings.



# Contact Information



Ledgebit Technologies Private Limited,  
401, Vipul Trade Center, Sec 48,  
Gurugram, Haryana 122018



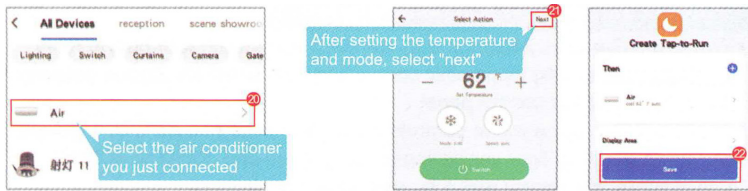
[www.ledgebit.com](http://www.ledgebit.com)



[sales@ledgebit.com](mailto:sales@ledgebit.com)



+91-9810320256



Once the code is successfully applied, you'll need to establish a connection between each button on the screen switch air conditioner control interface and the mobile app. Use "Tap-to-Run" to complete the connection building process. You can refer to Step 9(On Page 6) for guidance.

